



SANY
supported by **Putzmeister**

SY47 TRUCK-MOUNTED CONCRETE PUMP

PRODUCT SPECIFICATIONS

EFFICIENCY IN YOUR FLEET

The SANY boom pumps, fully supported by Putzmeister America, combine automotive grade manufacturing with Putzmeister's industry leading Sales, Parts, and Service teams.

The SY47 model is an example of SANY's rigorous and precise manufacturing philosophy and its unwavering commitment to safety. SANY is committed to saving you time and money with wear resistant parts, reduced fuel consumption, and increased efficiency. Self-diagnostic technology continuously monitors more than 200 aspects of the system during operation and can easily detect any faults and reduce the time it takes to fix problems. The SY47 model was designed with efficiency and cost savings in mind to add value to your fleet.

Toll-Free Hotline: 1-800-884-7210

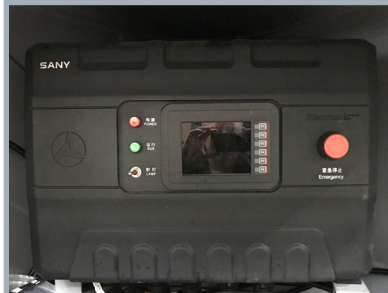
Parts & Service: 1-800-890-0269

FEATURES EXPLAINED

SANY LIQUID DISPLAY (SYLD):

The SANY Liquid Display (SYLD) interface gives users the ability to quickly conduct diagnostics. The SYLD provides inputs/outputs, bypasses, and fault codes to troubleshoot and get your pump operational.

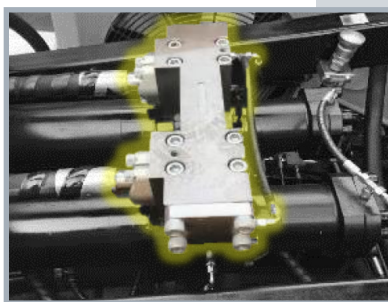
9



ROD-SIDE/PISTON-SIDE PUMPING, HIGH-LOW PRESSURE SWITCH (SBU):

Logic boxes on the pump allow the operator to switch from low to high pressure pumping with just a switch. High-low pressure changeover switch is located on the back panel.

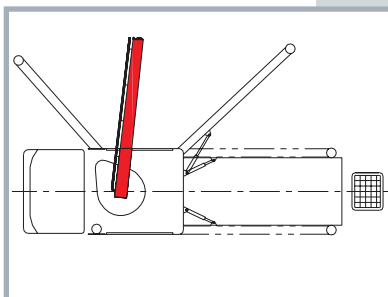
10



AUTOMATIC OSS:

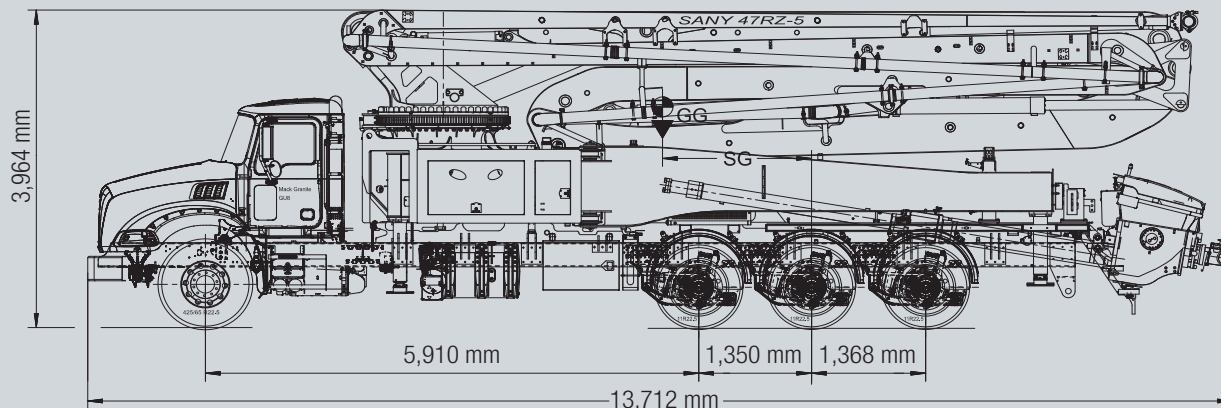
SYMC automatically estimates the boom rotation area according to pump mode, outriggers, and stabilization feedback.

11

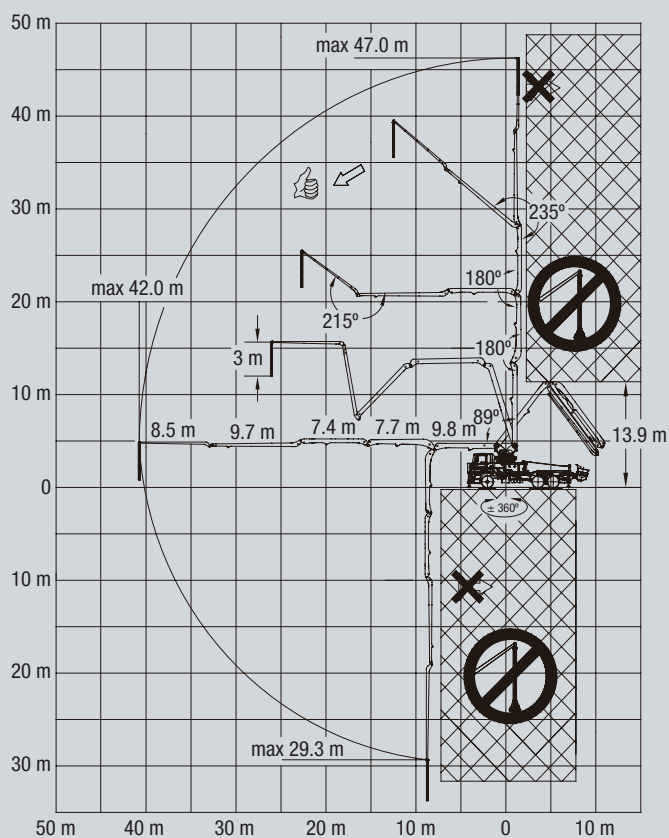


STANDARD EQUIPMENT

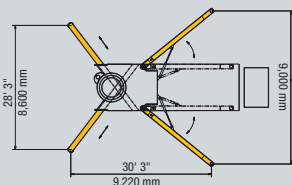
- 164 gal water tank
- Water pump 66 gal/min (39 psi)
- Twin wall delivery line — DN 125, 5.5"
- 3 m end hose — DN 125, 5.5"
- Concrete hopper with agitator
- Central lubrication hopper
- Hopper grate RFID agitator safety switch with bypass monitoring system (select models)
- Hopper worklight
- Side marker lamps
- Chrome-lined material cylinder
- SANY SYLD user interface display
- SANY SYMC control system
- Radio remote control propotional
- 2nd remote control transmitter incl. 30 m cable
- Boom pedestal (X-type outriggers and swing out legs)
- OSS one side support
- 4x outrigger pads
- Boom and frame horns, activated at hopper or via remote
- Rear step handrail
- Boom not in cradle warning device
- Guardrail on pedestal
- 2x 12V/24V converter
- Aluminum decking
- Left and right side rear steps
- Foldable hopper lid
- Hopper grate vibrator (remote control)



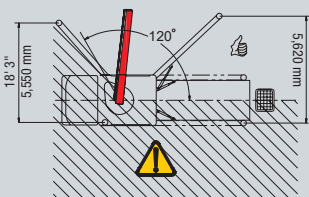
SY47 RANGE DIAGRAM



OUTRIGGER DIAGRAM



OSS DIAGRAM



SY47

Machine

Length	45' 0" (13.7 m)
Width	8' 5" (2.6 m)
Height	13' 0" (4.0 m)
Weight	79,460 lbs (36,043 kg)

Boom

Boom Folding Pattern	RZ
Boom Rotation	± 360
Boom Arms	5
Vertical Reach	154' 2" (47 m)
Horizontal Reach	137' 10" (42 m)
Unfolding Height	45' 7" (13.9 m)

Outrigger

Type of Outriggers	X Extension / Swing out
Front Outrigger Spread	28' 3" (8.6 m)
Rear Outrigger Spread	29' 6" (9.0 m)
One Side Support (OSS)	Yes

Pump

SANY PCU model	SY-200
Main Oil Pump	Rexroth
Hydraulic System Configuration	Open
Hydraulic System Pressure (bar)	4,641 psi (320 bar)
Output - Rod Side (m³/hr)	262 yd³/hr (200 m³/hr)
Output - Piston Side (m³/hr)	179 yd³/hr (137 m³/hr)
Pressure - Rod Side (bar)	1,204 psi (83 bar)
Pressure - Piston Side (bar)	1,757 psi (121 bar)
Strokes Per Minute - Rod Side	33
Strokes Per Minute - Piston Side	23
Material Cylinder Diameter	10.2" (260 mm)
Stroke Length	6' 3" (1,900 mm)

Hopper

Height	55" (1.4 m)
Capacity	159 gal (600 L)

*Technical data is based on Mack 86BR 8x6 chassis selection

A PROMISE OF PERFORMANCE

When you're putting together a concrete pumping fleet, it's important to work with a company that's with you every step of the way. Rest assured that when you purchase a SANY unit through Putzmeister America, Inc., you have the full backing of our company.

CanCréte

Canada's Exclusive
Putzmeister Dealer

VANCOUVER | CALGARY | TORONTO, HQ | ORANGEVILLE | QUÉBEC
1-800-695-9372 | sales@cancrete.ca | www.cancrete.ca

SANY

supported by **Putzmeister**



Putzmeister

1733 90th Street | Sturtevant, WI 53177 USA
T: (262) 886-3200 | (800) 884-7210
F: (262) 884-6338 | sanyconcretemachinery.com

Supporting you 24/7

- **Customer Support and Service:** In addition to 24/7 technical support, Putzmeister has experienced Field Service Technicians available for Boom Pump start-ups.
- **Warranty Coverage:** Putzmeister warrants SANY Concrete Pumps for 12 months or 2,000 hours (whichever occurs first) after the delivery to the initial purchaser.
- **Parts and Accessories:** Customers can purchase parts through Putzmeister America. Our in-stock inventory includes more than 20,000 parts.
- **Quality and Support:** From questions you may have before your purchase to technical expertise you need right on the job site, you're never alone with Putzmeister. Choose Putzmeister and you get more than equipment. You have a promise of performance.