


The SANY logo is displayed in white, bold, uppercase letters within a red rectangular box in the top right corner of the page.

**SANY**

A large, articulated concrete pump boom is shown in a grayscale image, extending diagonally from the bottom left towards the top right. The boom is composed of several segments connected by hydraulic joints. In the background, a range of rugged, rocky mountains is visible under a clear sky.

**SY32**

**TRUCK-MOUNTED  
CONCRETE PUMP**

**PRODUCT SPECIFICATIONS**

## EFFICIENCY IN YOUR FLEET

The SANY boom pumps, fully supported by Putzmeister America, combine automotive grade manufacturing with Putzmeister's industry-leading Sales, Parts, and Service teams.

The newest addition to our portfolio includes the SY32RZ5. The SY32 sits on a 3-axle straight truck and can pump 200m<sup>3</sup> per hour, making the unit one of our most powerful pumps with maximum reach capabilities, all in one cost-effective package. All SANY concrete pumps offer value, simplicity, reliability, and cost-effectiveness.

**Toll-Free Hotline:** 1-800-890-0269

**Parts & Service:** 1-800-884-7210

## FEATURES EXPLAINED

### THE NEW SYSD 11" TOUCH DISPLAY:

SYSD Touch Display makes operation more user-friendly and allows users to quickly conduct diagnostics. The SYSD provides inputs/outputs, bypasses and fault codes to troubleshoot and get your pump operational.

9



### ROD SIDE PISTON SIDE SWITCH (SBU):

Logic boxes on the pump allow the operator to switch from low to high-pressure pumping with just a switch. High-low pressure changeover switch is located on the back panel.

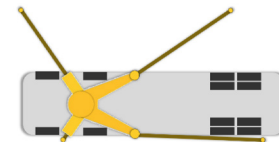
10



### AUTOMATIC OSS:

SYMC automatically estimates boom rotation area according to pump mode, outriggers, and stabilization feedback.

11



### DECK SPACE:

3.7 meters of deck space with side panels to store hoses and pipes.

12



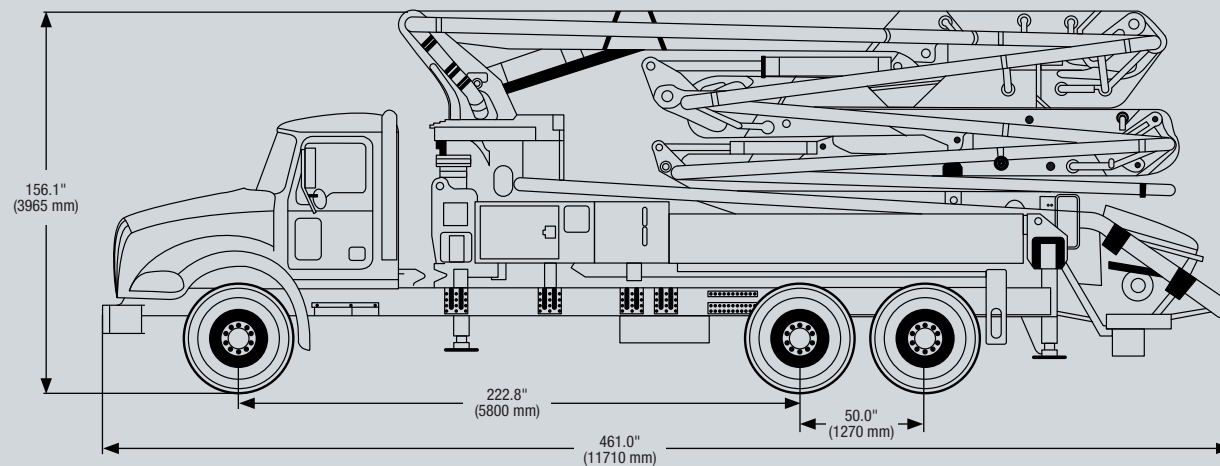
### IMPROVED HOPPER AREA:

Big step for easier cleanup. New bracket for water hose.

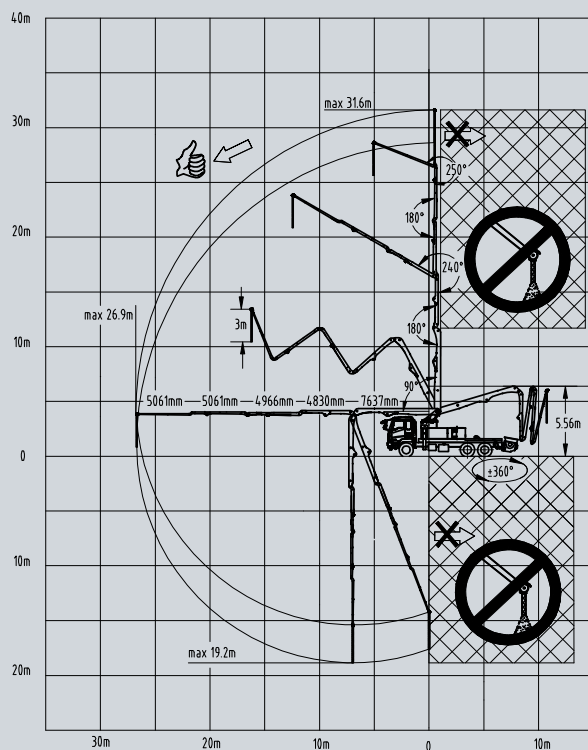
13

## STANDARD EQUIPMENT

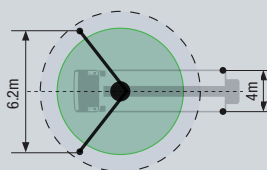
- 185 gal water tank
- Water pump 30 gal/min (105 psi)
- Twin wall delivery line — DN 125, 5.5"
- 3 m end hose — DN 125, 5.5"
- Concrete hopper with agitator
- Central lubrication hopper, hydraulically
- Hard metal wear parts kit
- Hopper grate agitator safety switch
- Hopper work light
- Side marker lamps
- Chrome-lined material cylinder
- SANY SYLD user interface display
- SANY SYMC control system
- Radio remote control proportional
- 2nd remote control transmitter incl. 30 m cable
- Boom pedestal (X-type outrigger and swing-out legs)
- OSS one-side support (assistance device)
- 4x outrigger pads
- Horn hopper activated via remote
- Rear step handrail
- Boom-mounted horn (manual)
- Boom not in cradle warning device
- US road approval KIT
- 12V/24V converter
- Aluminum decking
- Left and right side rear steps
- Plastic hopper cover, foldable
- Hopper grate vibrator (remote control)



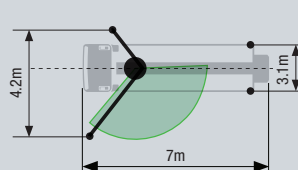
## SY32 RANGE DIAGRAM



## OUTRIGGER DIAGRAM



## OSS DIAGRAM



## SY32

### MACHINE

Length	38' 5" (11.7 m)
Width	8' 5" (2.6 m)
Height	12' 10" (3.9 m)
Weight	52,320 lbs (23,732 kg)

### BOOM

Boom Folding Pattern	RZ
Boom Rotation	± 360
Boom Arms	5
Vertical Reach	103' 8" (31.6 m)
Horizontal Reach	88' 3" (26.9 m)
Unfolding Height	18' 4" (5.6 m)

### OUTRIGGER

Type of Outriggers	X - H Extension
Front Outrigger Spread	20' 4" (6.2m)
Rear Outrigger Spread	13' 1" (4m)
One Side Support (OSS)	Yes

### PUMP

SANY PCU model	SY-200
Main Oil Pump	Rexroth
Hydraulic System Configuration	Open
Hydraulic System Pressure	4641 psi (320 bar)
Output - Rod Side	260 yd³/hr (200 m³/hr)
Output - Piston Side	180 yd³/hr (137 m³/hr)
Pressure - Rod Side	1201 psi (83 bar)
Pressure - Piston Side	1757 psi (120 bar)
Strokes Per Minute - Rod Side	33
Strokes Per Minute - Piston Side	23
Material Cylinder Diameter	10.2"
Stroke Length	74.8"

### HOPPER

BC38C10AM

Height	55"
Capacity	159 gal

† Technical data is based on Mack Granite chassis selection



# DEDICATION STRONG AS CONCRETE

When you're putting together a concrete pumping fleet, it's important to work with a company that's with you every step of the way. Rest assured that when you purchase a SANY unit through Putzmeister America, Inc. you have the full backing of our company.



## Supporting you 24/7

- **Customer Support and Service:** In addition to 24/7 technical support, Putzmeister has experienced Field Service Technicians available for Boom Pump start-ups.
- **Warranty Coverage:** Putzmeister warrants SANY Concrete Pumps for 12 months or 2,000 hours (whichever occurs first) after the delivery to the initial purchaser.
- **Parts and Accessories:** Customers can also purchase parts through Putzmeister America. Our in-stock inventory includes more than 20,000 parts.
- **Quality and Support:** From questions you may have before your purchase to technical expertise you need right on the job site, you're never alone with Putzmeister. Choose Putzmeister and you get more than equipment. You have a promise of performance.

# SANY



## Putzmeister

1733 90th Street | Sturtevant, WI 53177 USA  
T: (262) 886-3200 | (800) 884-7210  
F: (262) 884-6338 | [sanyconcretemachinery.com](http://sanyconcretemachinery.com)