

Description

Brand: Chemgrout
Class: Shotcrete/Grou
t/Fireproofing

\$24,000

Price in USD

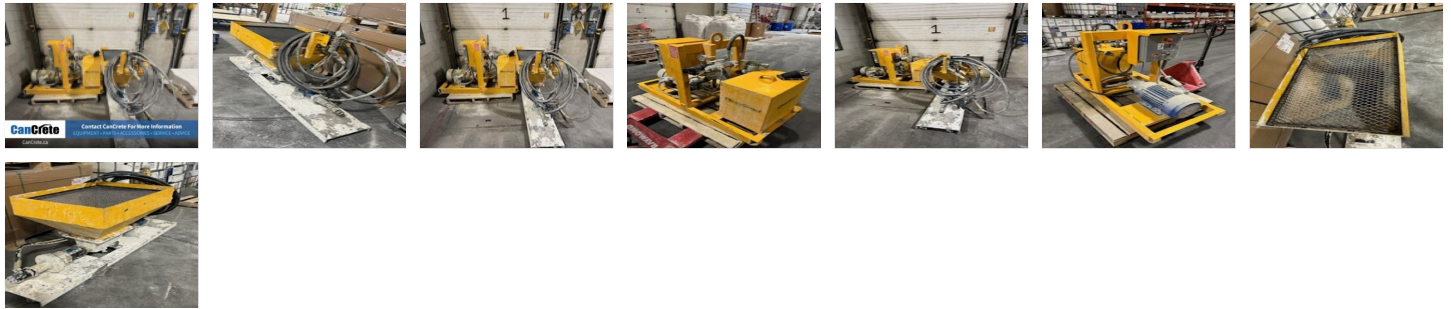
Price in CAD

Why CanCrete? We are experts in our field, from sales to parts, repairs, customer service, tech support, and advice. Rest assured, our commitment to excellence and service continues long after you make your investment.



Contact CanCrete For More Information
EQUIPMENT • PARTS • ACCESSORIES • SERVICE • ADVICE

CanCrete.ca



Pump Specifications

Brand Chemgrout	Model CG2C6/EHT CUSTOM	Voltage 220V 3PH
GPM 20 GPM OUTPUT	Hopper 60 GAL HOLDING HOPPER	Max Pressure 261 PSI
Size 84"L X 34"W X 36"H		

Additional Specifications

SKID MOUNT POWER SOURCE ON SEPARATE SKID	ROTOR STATOR	WILL REQUIRE TRANSFORMER APPROX. \$1000.00
---	---------------------	---